



State of GIS in Vermont

GIS Everywhere, Anytime, On Any Device for Everyone!

March 2, 2017

Presented by David Healy

To The Vermont House Energy and Technology Committee

State of GIS in Vermont Three Eras

Vision: GIS Everywhere; Anytime; On Any Device for Everyone

Background

Data Development, Organization, & Access: A-

Government Utilization: C+

Operational Capacity and Infrastructure: C+

Agency/Department Organization and Utilization: C

Economic Drivers: B

Future Trends and Possibilities: ?

Open Data From Everywhere: A+

Era 1 1988-1995: Organizational / Formative / Background

State of Geographic Information Systems in Vermont

Vice President, Applied Information Management @ Stone Environmental

- Since 1995 Stone's Geospatial Data Solutions Group grew from 1 person to eight full-time GIS specialists with GIS revenues in 2016 of > \$800,000.
- Vermont GIS Data is Essential to all Aspects of our Vermont Consulting.

VGIS Organizational

- Drafted Original Language in Act 200 Establishing VGIS in OPRD
- Operationalized GIS in Vermont as a Collaborative State/Regional/Local and Private Sector Venture - 1988-1991:
 - Data Development
 - Data Standards
 - Data Sharing Polity
 - Training

Provide the Committee a Perspective as a User of VGIS; 30 years of GIS Experience locally, Nationally and Internationally, and as a Business.

Era 2 1995-2015: Data Development, Dissemination & Use

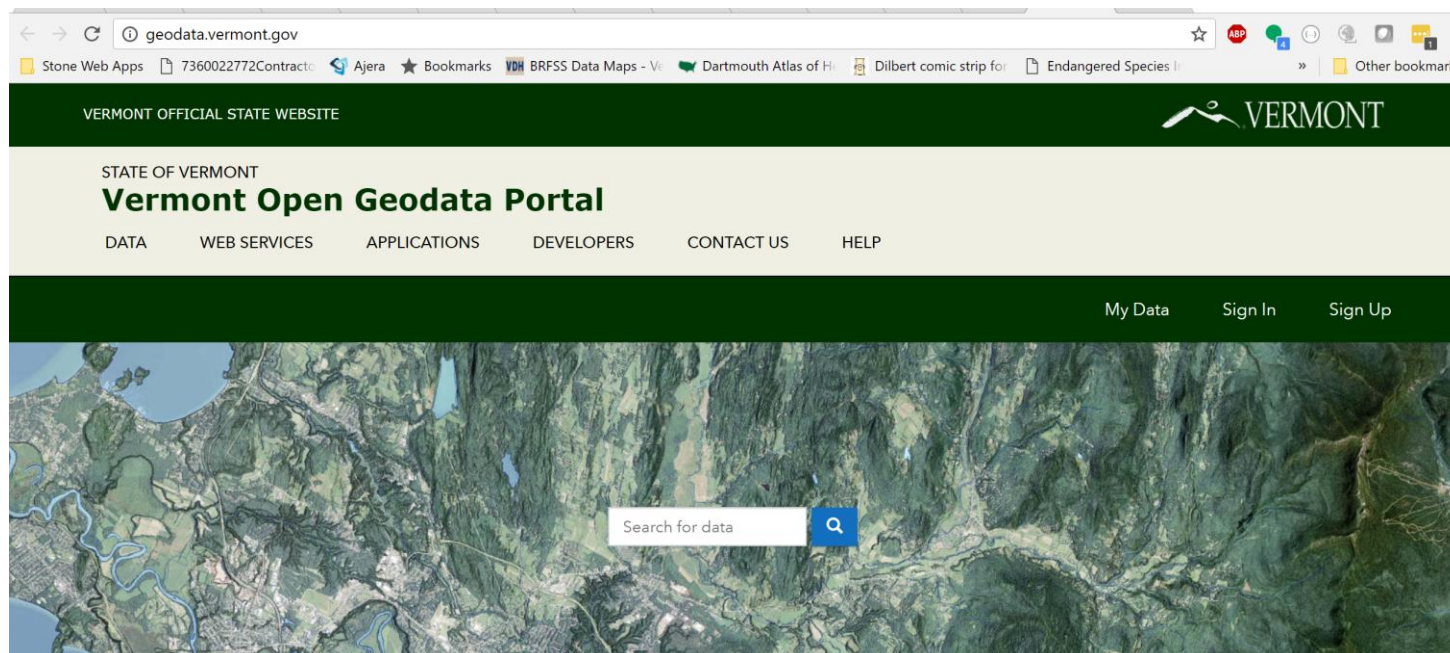
State of Geographic Information Systems in Vermont

Data Availability: A

Data Access: B+

- Superb Open Data Portal -- Great Data Search and Web Mapping
- Still Need all State, Regional and Local Contributors in Same Portal
- Still Missing Critical Data: Current Socio-Economic; Bedrock Geology

Data Documentation and Quality: A+



Era 2 1995-2015: Data Development, Dissemination & Use

State of Geographic Information Systems in Vermont

- Diverse and Disparate Widespread Adoption by State Organizations and RPCs
- Enterprise GIS Consortium Started to Help Coordinate in State Government
- VCGI Outside of Government
- Beginning of Web-based Data Portals and Map Viewers
- Databases Robust with Many Users
- Phone and Tablet Applications Begin

Era 2 1995-2015: Data Development, Dissemination & Use

State of Geographic Information Systems in Vermont

Government Operations and Utilization: C+

- Ranges from enterprise uses (Vtrans) to “one off” uses of technology (ADCA)
 - The skill levels and understanding of the technology varies tremendously
 - Even those with skills rarely go to national conferences or developer courses.
 - Until GIS is embedded in each Agency Secretary and Commissioner office level, Executives will not be able to get critical information rapidly.
 - Some Vermont Agencies/Departments saw GIS as maps: it is so much more.

Era 3 After 2015: GIS Solutions Everywhere, Anytime, On Any Device for Everyone

State of Geographic Information Systems in Vermont

Over 300 State and Local Government GIS Solution Templates Exist!

Solutions Require:

- Organizational Harmonization
- Executive Leadership

Solutions Cover Diverse Segments of Government

- Desktop Solutions
- Web Apps
- Native Apps
 - Tablet
 - Phone
- Field Data Collection

Skill Development Is Essential

- Hackathons/Internal and Cross Disciplinary Efforts
- Conference Participation and Attendance

i am building A SMART COMMUNITY

esri.com/SmartSolutions

PUBLIC WORKS

- Vision Zero
- Adopta
- Bridge Inventory
- Campus Editing
- Campus Place Locator
- Capital Project Planning
- Capital Project Tracking
- Citizen Problem Reporter
- Crash Analysis
- Flood Planning
- Guardrail Inventory
- Mosquito Adulticide Planning
- Mosquito Field Operations
- Mosquito Health Concerns
- Mosquito Lincicide Reporting
- Mosquito Population Surveillance
- Mosquito Service Request
- Mosquito Spray Areas
- Mosquito Spray Exclusions
- My Government Services
- Pavement Marking Inventory
- Plans and Drawings
- Public Comment
- Public Parking
- Railroad Crossing Inventory
- Road Closures
- Road Maintenance Agreements
- Road Network Management
- Sidewalk Inventory
- Sign Inventory
- Signal Inventory
- SnowCOP
- Street Furniture Inventory
- Street Tree Inventory
- Streetlight Inventory

LAND RECORDS

- Assessment Appeal
- Community Parcels
- Data Reviewer for Tax Parcels
- Parcel Drifter
- Public Land Survey Editing
- Residential Comp Finder
- School Locator
- Tax Map Book
- Tax Parcel Editing
- Tax Parcel Viewer
- Tax Reverted Property
- Value Analysis Dashboard

ENTIRE ORGANIZATION

- Administrative Area Data Management
- ArcGIS Online for Local Government
- Data Reviewer for Basemaps
- Local Government, 3D Basemaps
- Local Government Basemaps
- Local Government Information Modal
- Service Catalog

PLANNING AND DEVELOPMENT

- 3D Public Survey
- Address Geocoding
- Address Data Management
- Address Field Verification
- Blight Status
- Calculate Solar Radiation
- Code Violation
- Community Addresses
- Data Reviewer for Addresses
- Events Calendar
- Events Coordination
- Events Map Gallery
- Events Permit
- Events Permit Review
- Events Site Map
- Floodplain Inquiry
- Incentive Zones
- Land Use Inquiry
- Live, Work, Locate
- Park Locator
- Photo Survey
- Public Comment
- Public Notification
- Shadow Impact Analysis
- Site Selector
- Visibility Assessment
- Visualize Proposed Developments

PARKS AND GARDEN

- Collection Editor
- Collection Mapper
- Collection Viewer
- IrisBG Sync
- Irrigation Editor
- Irrigation Mapper
- Irrigation Viewer
- Map Tour Story Maps
- Model Organization
- Parks Canvas Basemap
- Parks Color Basemap
- Tree Assessor
- Tree Assessor
- Visitor Amenity Mapper

ELECTIONS

- Early Voting
- Election Polling Places
- Election Results
- Historical Election Results Gallery
- My Elected Representative
- Polling Place Wait Times

FIRE SERVICE

- AED Inventory
- AED Locator
- AED Reporter
- Fire hydrant Inspection
- Fire Incident Maps
- Fire Run Book
- Fire Safety Survey
- Fire Station Wall Map
- Pre-incident Plan Coordinator
- Pre-incident Plan Dashboard
- Pre-incident Plan Inventory
- Pre-incident Plan Locator
- Target Hazard Analysis

LAW ENFORCEMENT

- Call Phone Analysis
- Field Interview
- Public Safety Incident Maps
- Repeat and Near Repeat Analysis

EMERGENCY MANAGEMENT

- ArcGIS Online for Emergency Management
- CAMEO Tools
- Citizen Reports
- Common Operational Picture
- Community Addresses
- Community Mitigation
- Community Parcels
- Damage Assessment
- Dabris Reporting
- Emergency Assistance
- Emergency Management Maps
- Evacuation Zones
- Event Locator
- Events Coordination
- Events Map Gallery
- Events Permit
- Events Permit Review
- Events Site Map
- Flood Planning
- Floodplain Inquiry
- Hazard Assessment and Analysis
- Hazard Vulnerability Assessment
- Health and Safety Reports
- Impact Summary
- Incident Briefing
- Incident Status Dashboard
- Logistics Planning
- My Hazard Information
- Operations Response
- Photo Survey
- Public Information
- Road Closures
- Shelter Locator
- Situational Awareness Viewer

PUBLIC SAFETY

- Antenna Structures Information Modal
- Attribute Assistant
- Backhaul Optimization
- Core Map
- Coverage Processing
- Door to Door Sales Campaign
- Fiber Network Data Model
- Hazard Reporting Collector
- Map Notes
- Model Organization for Wireless Network Trace Widget
- Model Organization for Wireless Network Trace Widget
- Point of Sale
- Project Planning Markup
- Real Store Locator
- Service Qualification
- Service Request
- Serviceability Lookup
- Serviceability Widget
- Wireless Bulk Serviceability
- Wireless Network Viewer
- Wireless Bulk Serviceability

ELECTRIC UTILITIES

- ArcFM Feed Map
- Damage Assessment Collector
- Damage Collection Dashboard
- Data Reviewer for Electric Utilities
- Electric Facility Maps
- Hazard Notification
- Hazard Reporting Collector
- Impact Analysis
- Joint Use Survey
- Map Change Request
- Map Move
- Model Organization for Electric Utilities
- Rules Reports
- Public Outage Map
- Report Streetlight Problem
- Service Feasibility Widget
- Social Media Sentiment Viewer
- System Improvement Map
- Violations Notification

TELECOMMUNICATIONS

- Antenna Structures Information Modal
- Attribute Assistant
- Backhaul Optimization
- Core Map
- Coverage Processing
- Door to Door Sales Campaign
- Fiber Network Data Model
- Hazard Reporting Collector
- Map Notes
- Model Organization for Wireless Network Trace Widget
- Model Organization for Wireless Network Trace Widget
- Point of Sale
- Project Planning Markup
- Real Store Locator
- Service Qualification
- Service Request
- Serviceability Lookup
- Serviceability Widget
- Wireless Bulk Serviceability
- Wireless Network Viewer
- Wireless Bulk Serviceability

WATER UTILITIES

- Adopta
- Attribute Assistant
- Backflow Inspection
- Capital Improvement Planning
- Capital Project Planning
- Capital Project Tracking
- CCTV Processor
- Combined Sewer Overflow Notification
- Construction Site Violation
- Customer Complaints
- Data Reviewer for Water Utilities
- Drinking Water Advisory
- Green Infrastructure
- High/Low Water Consumption
- Hydrant Maintenance Inspection
- Illicit Discharge Trace
- Inlet Inspection
- Leak Logger Analysis
- Main Break Notification
- Manhole Inspections
- Map Change Request
- Map Notes
- Model Organization for Water Utilities
- MS4 Inventory Recorder
- Network Trace Widget
- Nighttime Flow Analysis
- Outage Viewer
- Pressure Zone Analysis
- Proposed Water Design
- Sanitary Sewer Network
- Service Feasibility Widget
- Service Service Lookup
- Social Media Sentiment Viewer
- Stormwater Network
- Utility Isolation Trace
- Valve Exercising
- Water Conservation Dashboard
- Water Distribution Network
- Water Inventory Reports
- Water Leak Investigator
- Water Restrictions
- Water SCADA Processor
- Water Service Request
- Water Utility Network Editing and Analysis
- Water Violations

GAS UTILITIES

- As-built Editing and Analysis
- As-Built Mapping
- Attribute Assistant
- Damage Assessment Collector
- Data Reviewer for Gas Utilities
- Excavation Damage Collector
- Escalated Pipe Collector
- Facility Reports for Gas Distribution
- Facility Reports for Gas Gathering
- Facility Reports for Gas Transmission
- Gas Facility Maps
- Gas Main Replacements
- Gas Realign
- Gas Service Lookup
- Leak Survey Collector
- Leak Survey Compliance Dashboard
- Leak Survey Manager
- Map Change Request
- Map Notes
- Model Organization for Gas Utilities
- Potential New Customers
- Service Feasibility Widget
- Service Request
- Utility and Pipeline Data Model
- Utility Map Generator

STATE GOVERNMENT

ENTIRE ORGANIZATION

- ArcGIS Online for Environment and Natural Resources
- ArcGIS Online for State Government
- Community Addresses
- Community Parcels

ECONOMIC DEVELOPMENT

- Event Locator
- Events Coordination
- Events Map Gallery
- Events Permit
- Events Permit Review
- Events Site Map
- Incentive Zones
- Live, Work, Locate
- Property Listing
- Property Listing Reviewer

SECRETARY OF STATE

- Early Voting
- Election Results
- Elections Polling Place
- Historical Election Results
- My Elected Representative

ENVIRONMENT AND NATURAL RESOURCES

- ArcGIS Online for Environment and Natural Resources
- Citizen Science Manager
- Citizen Science Reporter
- Environmental Analysis
- Environmental Impact Briefing
- Environmental Impact Public Comment
- Environmental Screening
- Event Locator
- Events Coordination
- Events Map Gallery
- Events Permit
- Events Permit Review
- Events Site Map
- Park and Recreation Locator
- Permit Dashboard
- Permit Inspections
- Permit Status
- Public Land Survey Editing Map
- State Trail Locator
- Water Quality Dashboard
- Water Quality Inspections
- Water Quality Inspections
- Water Quality Status
- Wildlife Photo Survey

FISH AND WILDLIFE

- Citizen Science Manager
- Citizen Science Reporter
- Environmental Screening
- Hunting License Locator
- Water Access Locator
- Water Quality Dashboard
- Water Quality Inspections
- Water Quality Inspections
- Water Quality Status
- Wildlife Management Area Locator
- Wildlife Photo Survey

TRANSPORTATION

- Bridge Inventory
- Crash Analysis
- Crash Risk Briefing
- Guardrail Inventory
- Pavement Marking Inventory
- Railroad Inspection
- Road Closures
- Sign Inventory
- Signal Inventory
- SnowCOP
- Streetlight Inventory
- Transportation 511
- Birth Outcomes Analysis
- Birth Outcomes Briefing
- My Health Services
- Restaurant Inspections
- Restaurant Inspections Dashboard
- Restaurant Inspections Results
- Water Quality Dashboard
- Water Quality Inspections
- Water Quality Status

HEALTH

- ArcGIS for Online for State Government
- Birth Outcomes Analysis
- Birth Outcomes Briefing
- My Health Services
- Restaurant Inspections
- Restaurant Inspections Dashboard
- Restaurant Inspections Results
- Water Quality Dashboard
- Water Quality Inspections
- Water Quality Status



Era 3 After 2015: Recommendations

GIS Solutions Everywhere; Anytime; On Any Device for Everyone

Elevate VCGI to Highest Level with Lead Responsibility to Assist in Solutions

Harmonize Solution Approach – Unified Theme Across Government

Authorize and Fund Enterprise GIS Software Licensing

Elevate the Location of Departmental “Solution” Teams

Purchase and Take Advantage of Esri’s Business/Community Analyst

Fully Take Advantage of Solution Templates

Increase Education/Training Funding

Mandate All Programmatic Tabular Data Go into Open Data Portal

- Both Geographically Encoded and Non-Geographically Coded
- Consider Abandoning Socrata as a Data Portal

State of Geographic Information Systems in Vermont

Stone Vermont Applications/Solution Examples

Agriculture Food and Markets

- AgBMP Application
- Geotargeting of Farm Digesters

Environment

- Class 3 & 4 Roads Erosion Risk
- Areawide Brownfield Studies
 - Bennington
 - Northfield
 - Swanton
- Stormwater Solutions

Health:

- Primary Care Service Areas – Green Mountain Care Board
- Vermont's Dental Landscape – Green Mountain Care Board
- Blueprint for Community Health Data Portal

Vtrans

- Road Vulnerability/Criticality

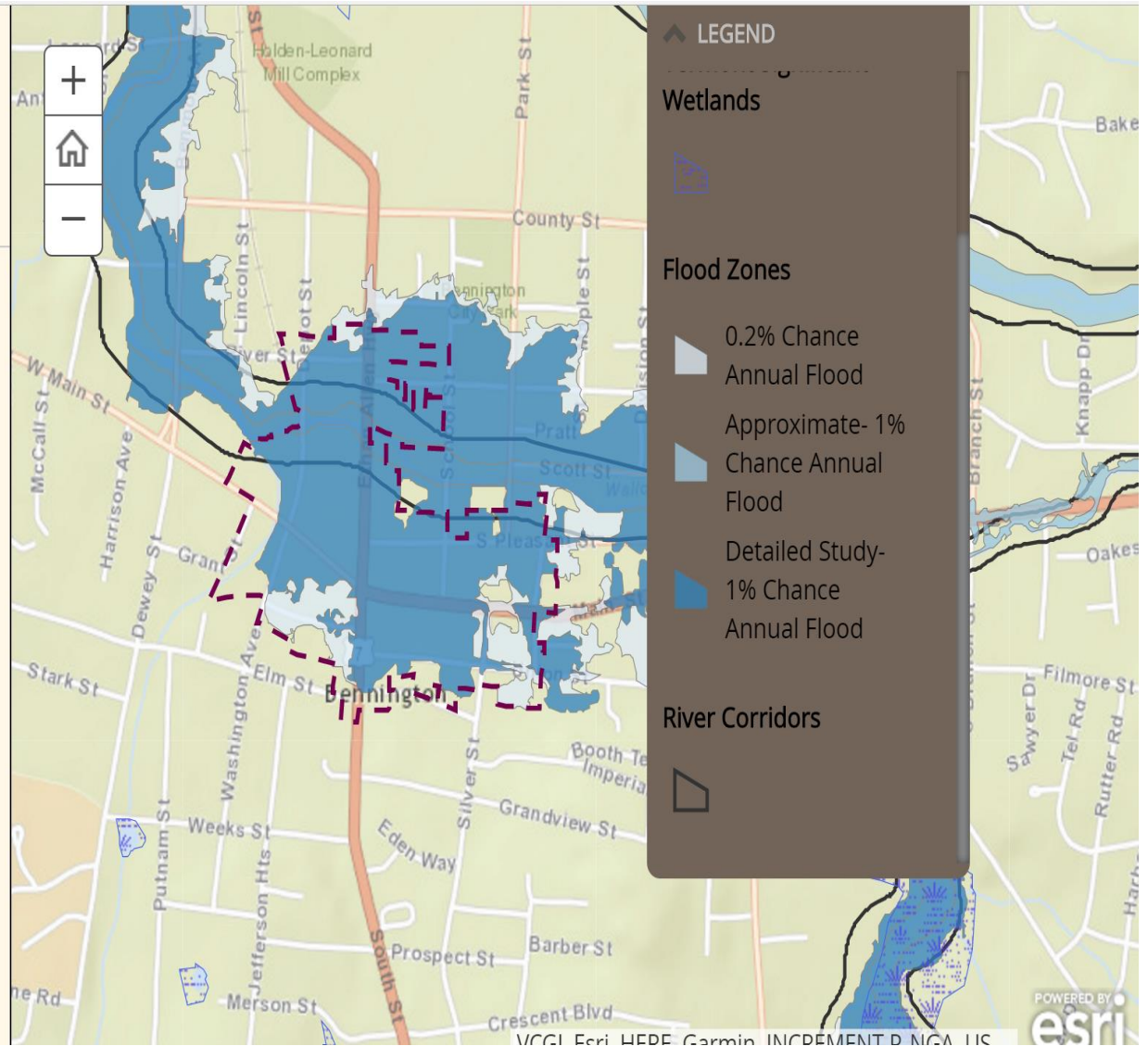
Bennington Downtown Area-Wide Plan

Natural Setting

Early industry of Bennington took advantage of water power provided by the Walloomsac River resulting in extensive development of the river's flood plain, armoring of its banks, and construction of levees. Today, much of Downtown Bennington resides within the 100 year flood zone or the designated river corridor.

Definitions:

River Corridor: According to the Vermont Agency of Natural Resources, a river corridors encompass the area of land surrounding a river that provides for the meandering, floodplain, and the riparian functions



resiliencyvt.net

Resiliency VT
Transportation Resilience Planning Application

Welcome, Roy!

VT Rt 100 segment Pitt 2.
Risk Category: **High**

Vulnerability	Risk
7	8
Asset Score	Mitigation Rank
3	16

Vulnerability Scores

Impact-Criticality Rating

Mitigation Options

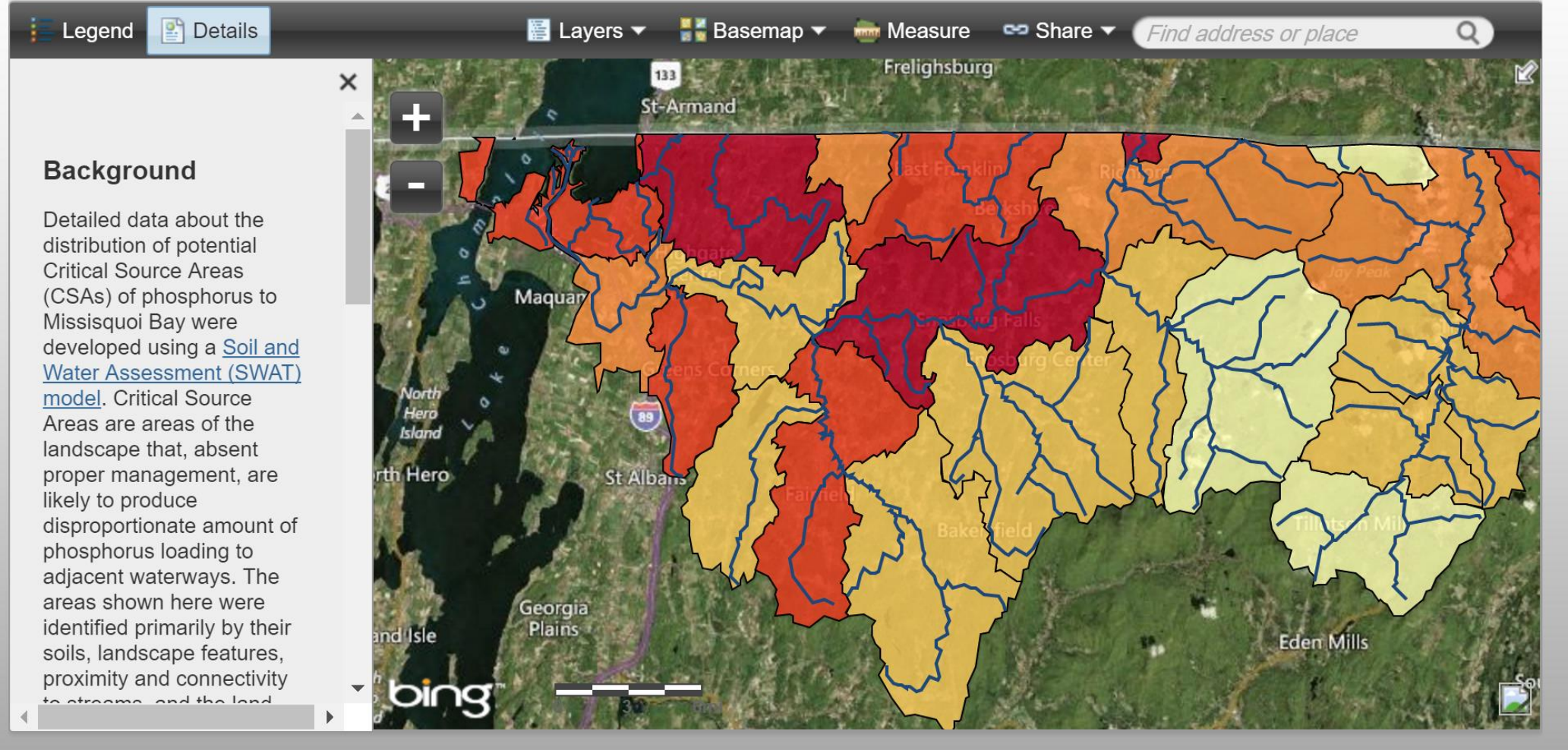
- Option 1: Repair roadway embankment to maximize bankfull channel width
- Option 2: Relocate roadway to east
- Option 3: Reconnect floodplain on opposite (west) bank

Gallery

Map Legend:

- DOIR Inere Damage Sites
- Rte. 100 Mileposts
- Potential Erosion Areas
- Q100 Shear Stress (lb/sqft)
 - 0 - 1.4
 - 1.4 - 2.1
 - 2.1 - 2.8
 - 2.8 - 3.7
 - 3.7 - 5.0
- HEC-RAS Cross-Sections
- Slope (LIDAR)
 - 50 - 75%
 - 75 - 100%
 - 100 - 125%
 - > 125%
- 5ft Contours (LIDAR)
- Road to River Differential (ft)
 - 0 - 5
 - 5 - 10
 - 10 - 15
 - 15 - 20
 - 20 - 25

Missisquoi Phosphorus Critical Source ...



Stone Environmental, Inc. [US] <https://vtpartners.stone-env.net/#/search>

ESRI Beta Home Ho... Representative Shap... HIV Spatial Data Re... www.do.gov/docum... ArcGIS API for Micro... Dartmouth Atlas of ... Other bookmarks

Farm, Town or Owner name:

Map Controls

Export Map Tools

Map Theme:

Basemap:

Optional Layers:

- PLU Boundaries
- CLU Boundaries
- ANR Counties
- ANR Towns
- ANR Deer Wintering Areas
- ANR Rare and Endangered
- ANR Wetlands VSWI Advisory
- ANR Waterbody/Streams
- ANR Soils
- ANR Soil Hydrogroup
- ANR Watersheds HUC12
- ANR Watersheds HUC10
- ANR Watersheds HUC8
- ANR Watersheds HUC6
- ANR Watersheds HUC4
- ANR Watersheds HUC2
- ANR Roads
- VCGI Parcels

FARM LIST (12 farms found matching filter)

Farm Name	Town	Owner
User Test Farm	Waterbury	Test
Test Farm	city	
alan test		
Test Katie	address 2	
Mikes House Test	Waterbury	
Test	Warren	
alan test		
Test Bennington Farm		
User Test NF	Richmond	
Testing Demo		Kane
TESTPattersonFarm		Patterson
alan test	mt willard	

FARM INFORMATION (User Test Farm)

Farm Name: User Test Farm **Owner Name:** User Test

Farm Address: 123 Main st , po box 35 Waterbur... **Owner Address:** , Fairfiel...

Primary Enterprise: Dairy **Owner Phone:**

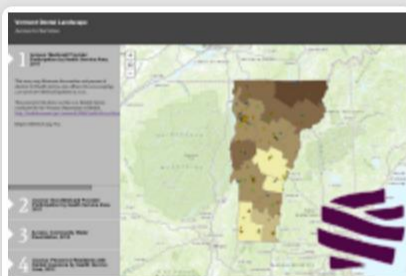
Fields

Crop:

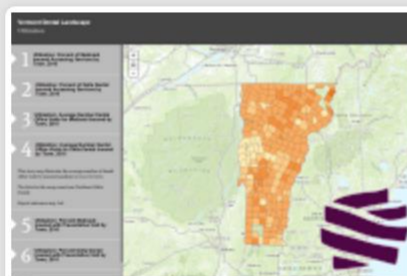
Field	Field Name	Landuse / Crop	Farm Tract #	Acres
172		Forest	none	4.36
240		Crop Cool Season Grass	none	11.15
215		Farmstead	none	6.64

View of Farm Field Practice and Cropping Information.

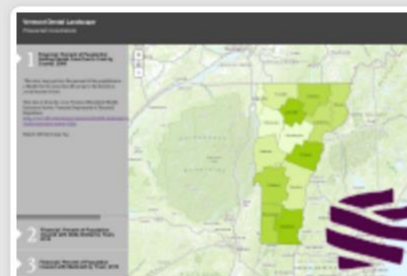
Understanding Conditions Through Story Maps



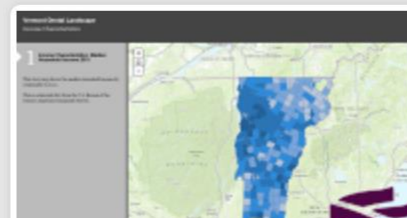
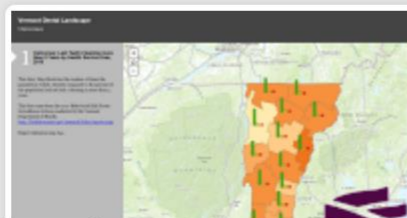
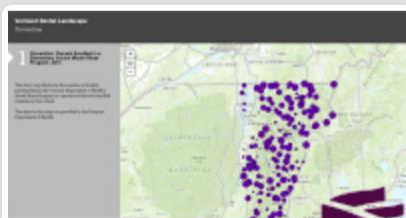
Access



Utilization



Financial

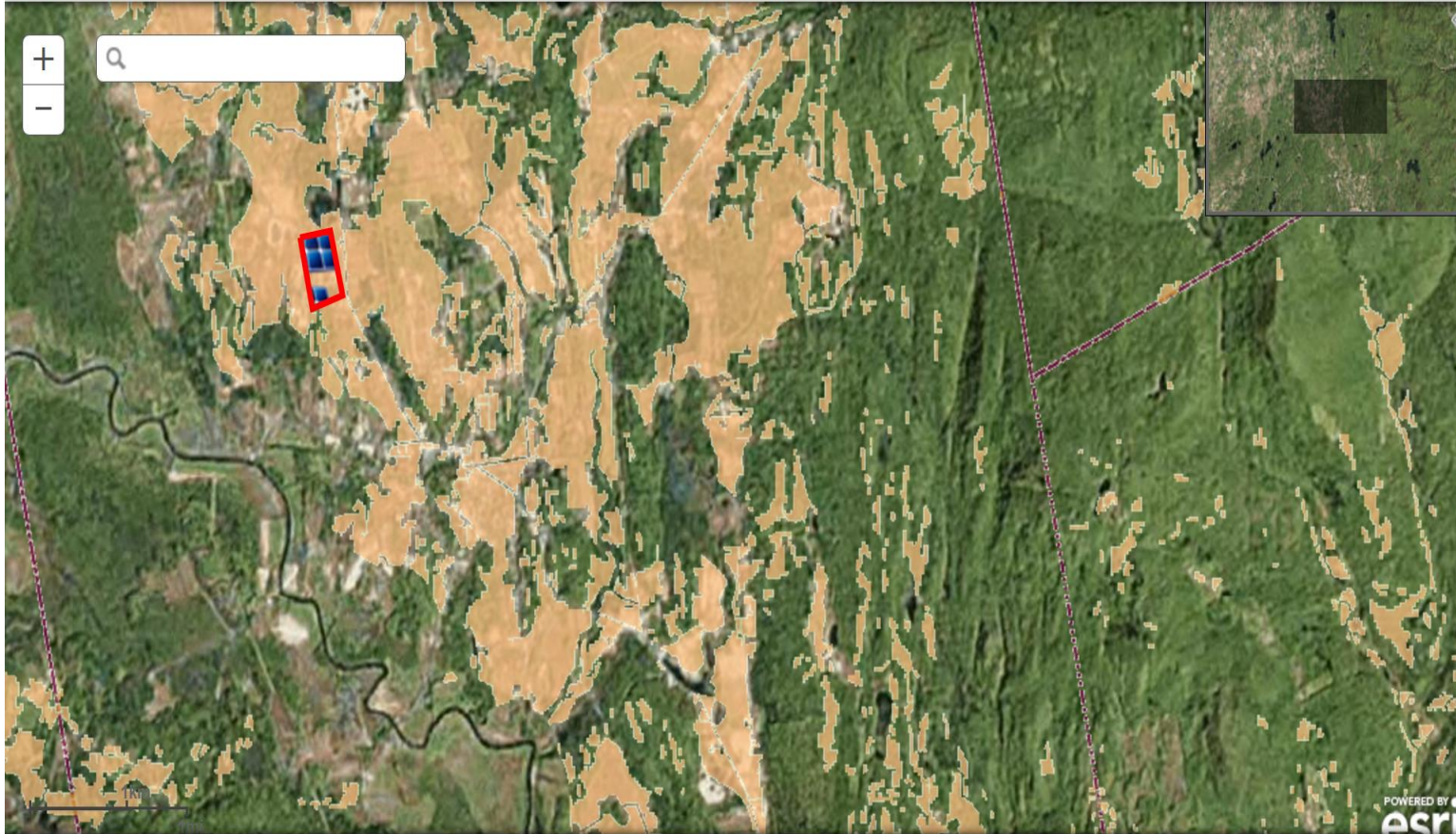


About the Vermont Dental Health Story Maps

The Vermont Dental Health Story Maps are a part of a study commissioned by the Green Mountain Care Board (GMCB) to examine the status of oral health care in Vermont. The Landscape Gallery was developed by Stone Environmental to support the JSI Research and Training Institute's Report to the Board. Stone Environmental compiled data from Vermont's Department of Health, Finance Regulation, Office of Medicaid, Northeast Delta Dental, and the U.S. Bureau of the Census. These maps represent insights into Dental Care Access, Utilization, Financial, Prevention,

-env.net/index.html

VT Solar Sandbox Create YOUR plan to reach our 2050 renewables goal



Choose a Community and Start Planning Your Clean Energy Future!

Brandon ▾

Brandon Statistics

Annual Use (kWh): 28,247,232

Average Use/

Household (kWh): 7,339

Click the button below to draw on the map to build solar panels

Add Solar Panels

Clear Map

Selected Panels

Area (m2):

Energy (kWh):

Delete Selected

Annual Energy Budget (kWh)

30,000

©2014 Stone Environmental, Inc.

[Click Here For More Info!](#)



Thank you.

For more information / www.stone-env.com

Contact / dhealy@stone-env.com